

OTP-LS8

Smart Watch DVR

User Manual



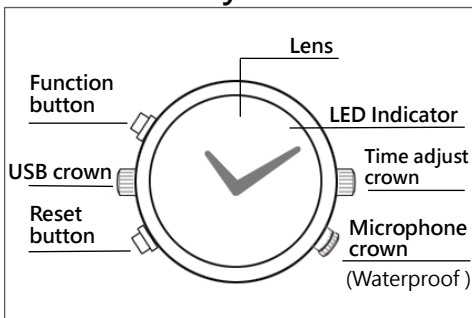
SUPER HD
2304x1296

Please read this manual carefully and thoroughly before any attempt to operate this product and retain it for your future reference.

Smart DVR Features

- Super image sensor for low illumination video recording, quick light response
- Super HD 1296P @ 30fps, 720P up to 60fps
- H.264 compression
- Built-in micro SD card, support up to 128GB
- ultra-integrated watch type design, suitable for meeting recording, evidence recording, and outdoor sports scenes, etc.

Smart DVR Layout



Main Operations

Important: Setting for waterproof (only for waterproof type)

Before any contact with water, be sure to screw the microphone crown and USB crown to the case by turning the crowns clockwise while applying gentle pressure, be sure to put the time adjust crown to the normal position.

Note: After setting for waterproof, no voice will be recorded during video recording, due to the microphone hole is sealed.



1. Powering the Smart DVR On/Off

To power on the Smart DVR, press and hold the Function button until the blue indicator light appears. After a few seconds the green light will flicker several times and then turn off, the Smart DVR will automatically begin recording video.

To turn off the Smart DVR push and hold the Function button until the light turns off.

2. Recording Video

(1).Power on the Smart DVR as in step 1. When first turned on the Smart DVR will automatically begin recording video.

(2).Push the Function button to stop recording, the blue light turns on and the Smart DVR is in standby mode.

(3).Push the Function button again to begin another recording.

The video streaming is divided into one file every 10 minutes.

NOTE: Be sure to unscrew the microphone crown for normal recording with voice.

3. Taking Photo

(1).To enter the photo mode, make sure the Smart DVR is in standby mode(the blue light is solid on), double-click the Function button, the Smart DVR will go into the photo mode and the blue and green light will blink alternately.

(2).Click the Function button once to take a picture, the blue light will blink twice.

(3).to quit the photo mode, double-click the Function button again, the Smart DVR will back to standby mode, the blue light keeps on.

4. Recording Audio

(1). To enter the audio recording mode, make sure the Smart DVR is in standby mode(the blue light is solid on), Click the Function button 3 times quickly, the blue light will blink several times and then turn off, the Smart DVR will automatically begin audio recording.

(2). To stop/quit audio recording mode, just click the Function button once, the Smart DVR will back to standby mode, the blue light keeps on.

5. Motion Detection

(1). To enter the motion detection recording mode, make sure the Smart DVR is in standby mode(the blue light is solid on), Click the Function button 4 times quickly, the green light will blink, the Smart DVR entered motion detection mode. When the object is moving in front of lens, the Smart DVR will start video recording automatically, green light blink faster. When the object stop moving, after a few seconds, the Smart DVR will stop recording. When the disk space is full, it will cut the earliest recorded file, to free space for new video file.

(2). Click the Function button once, will pause motion detecting, and the green light will keep on.

(3). To quit motion detection mode, again click the Function button 4 times quickly and continuously, the Smart DVR will back to standby mode, the blue light keeps on.

6. Auto Power Off

(1). When the battery power is low, the blue light will blink for seconds, and then the Smart

DVR will shut down.

(2). When the memory is full, both the blue and green light will blink for seconds, and then the Smart DVR will shut down.

(3). If no operation for two minutes in standby mode, the Smart DVR will shut down.

7. Charging the Battery

The Smart DVR has an internal battery. The battery can be charged via computer USB port or DC 5V adapter. Unscrew the USB crown, put the plug of USB cable in the Smart DVR first, then put another plug in the USB port of computer or DC 5V adapter.

If the blue light is flashing, that means the Smart DVR is in charge.

Please wait for the blue light stopping flashing (keeping solid on), which means the Smart DVR is full of power.

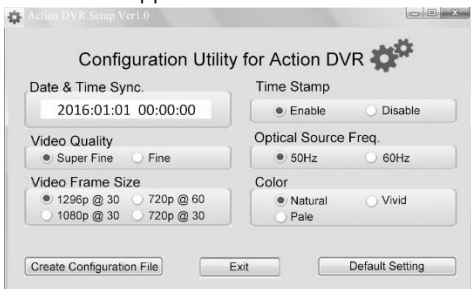
8. Reset your Smart DVR

When the Smart DVR works abnormal, you can try to reset it. Press both the Reset button and

Function button once in same time, restart the Smart DVR, it may work normally.

9. Setting your Smart DVR

Plug the Smart DVR into the computer USB port, a new removable disk will appear on the computer screen. Open the removable disk, you will find the file *setup.exe* under the root directory, double-click the file to run it, following window will appear:



You can set date/time, frame size, video quality, etc. After finishing changing, click the button **Create configuration file** on the lower left to save the settings. Click the button **Default Setting** to restore

the factory default Settings.

After safely removing the Smart DVR from the computer and turn on the Smart DVR, the settings will take effect.

10. Watch time adjusting

- (1). Pull the time adjust crown out to the time correction position.
- (2). Turn the crown to move the minute hand to set the correct time.
- (3). Securely return the crown to the normal position.

Specifications:

View Angle :	65°
Min. Illumination :	1 Lux
Video Format :	MOV
Compress Format:	H.264 advanced version
Vedio Resolution :	2304x1296 1920x1080 · 1280x720
Frame Rate :	1296P/1080P @30fps 720P @30fps/60fps
Photo Format :	JPG 4352x3264

Storage:	Micro SD up to 128GB
USB Interface :	USB 2.0
Battery Charge :	DC 5V/500mA
Battery Capacity:	380mAH
Dimension :	52×45×15mm(approx.)
Net Weight :	110 g (approx.)

Caution:

Your Smart DVR is a product of superior design and craftsmanship and should be treated with care.

- The Smart DVR may become fairly hot during recording – this is normal. To ensure proper cooling do not block the flow of air to the cover of the Smart DVR.
- Do not drop, or knock the Smart DVR. Rough handling can break internal circuit boards and fine mechanics.

Important:

All jurisdictions have specific laws and regulations relating to the use of cameras and voice recorders. Before using any camera and/or voice recorder for any purpose it is the buyer's responsibility to be aware of all applicable laws and regulations that prohibit or limit the use of cameras and voice recorders, and to comply with the applicable laws and regulations.